

# DATASHEET

Type: **DOME**  
Name: Pendant light  
ID: PC1347  
Designed by: LCM MARIN design studio



Download

## Description

A nod to classical Roman architecture, the new Dome collection of pendant and table lights follows the success of Dome Nomad, an earlier collection inspired by the great domes of Venice and evoking the eternity and expansiveness of the celestial vault. The elegant shade, comprising multiple layers of molten glass, each carefully inspected by the master glassmaker prior to blowing, comes in either smooth or wavy clear glass.



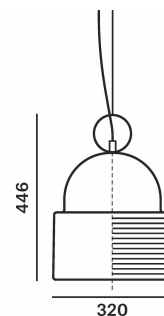
## Tech. description

The luminaire consists of a glass shade, metal frame with integrated LED module, metal printout on the lower edge of the screen, supply cable and steel cable. The luminaire is suspended from the ceiling canopy by means of a supporting steel cable.

## CONSTRUCTION SPECIFICATION

**Weight:** 6.8 kg  
**Construction material:** glass, metal  
**Cord length [mm]:** 2,200 mm  
**Mounting:** Ceiling  
**Environment:** Indoor

## DIMENSIONS [mm]



## ELECTRICAL SPECIFICATION

**Input voltage [V]:** 100 - 240 V  
**Frequency [Hz]:** 50-60 Hz  
**Max. power [W]:** 17,5 W  
**Coverage IP:** 20  
**Socket:** LED module  
**Light source:** -  
**Energy class:** E

## CERTIFICATIONS



BROKIS®

BROKIS S.R.O.  
ŠPANILOVA 1315/25  
163 00 PRAHA 6 - ŘEPY  
CZECH REPUBLIC

ORG ID 64940799  
VAT ID CZ64940799  
C 42174 MĚSTSKÝ SOUD  
V PRAZE

TEL +420 567 211 517  
TECHNICAL@BROKIS.CZ  
INFO@BROKIS.CZ  
WWW.BROKIS.CZ

2024\_03  
PAGE 1



### CM17866

<b>Type</b>	LED module
<b>Lamp wattage [W]</b>	15 W
<b>Input voltage [V]</b>	24 VDC
<b>Energy class</b>	E
<b>Flux [lm]</b>	1617 lm
<b>Light colour [K]</b>	2700 K
<b>CRI</b>	90
<b>Dimmable</b>	yes

### CM17914

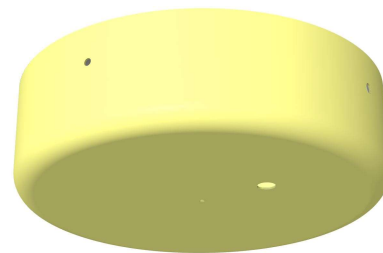
<b>Type</b>	LED module
<b>Lamp wattage [W]</b>	15 W
<b>Input voltage [V]</b>	24 VDC
<b>Energy class</b>	E
<b>Flux [lm]</b>	1099-1782 lm
<b>Light colour [K]</b>	1800-6500 K
<b>CRI</b>	90
<b>Dimmable</b>	yes



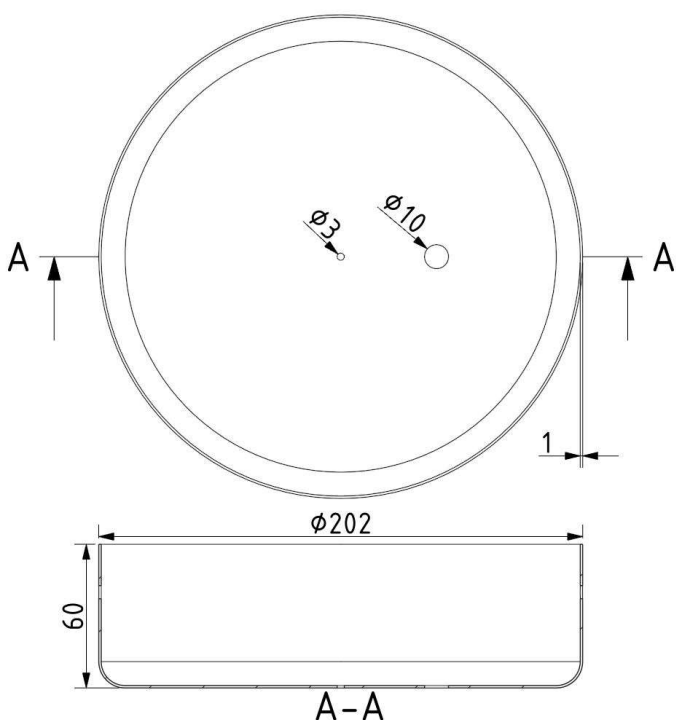


### INNER FIXTURE

Dimensions O x w [mm] 202 x 60 mm  
Weight [kg] 1.15 kg  
Material metal



### Drawing



### Hole placement

